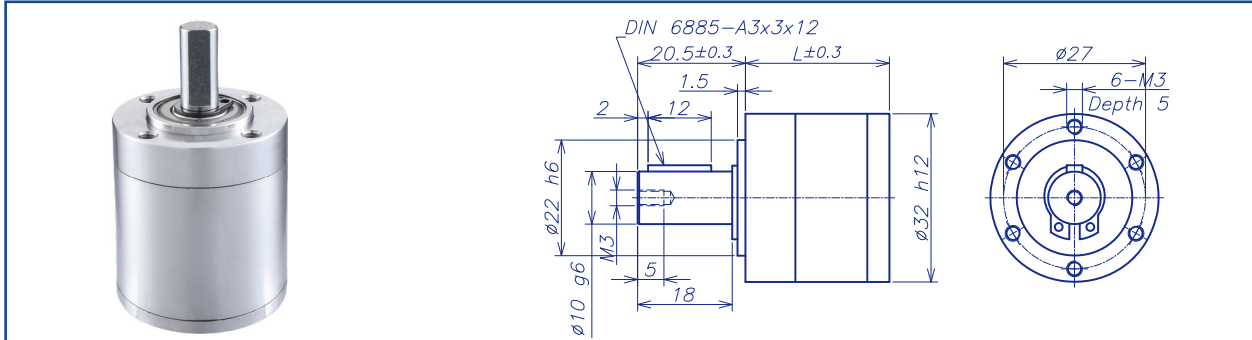


AM-32HP Series

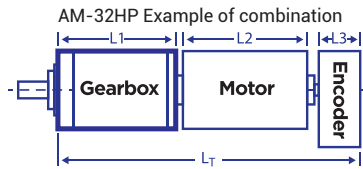


GEARBOX CHARACTER

Gear type	Straight teeth	Radial Play (10mm from flange)	max 0.1mm
Output shaft	Stainless steel hardened	Permissible force press fits	max. 150 N
Main gear	Alloy steel hardened	Permissible axial load (dynamic)	max. 120N
Ring gear	Stainless steel hardened	Recommended input speed	10000RPM
Adapter plate	Stainless steel	Operating temperature range	-40°C ~ +100°C
Bearing AT output	Ball bearing	Operating humidity range	10-90%RH
Axial play	0-0.3	Number of stages	1 2 3 4
Directions	CW/CCW	Permissible load (13mm from flange)	110N 175N 205N 205N

GEARBOX DATA

Number of stage	1			2		3			4		
	Reduction ratio X:1	3.4	4.2	5.8	11	33	47	72	138	160	337
Reduction ratio absolute	27/8	25/6	23/4	729/64 225/16 625/36 621/32 575/24	529/16	6075/128 1875/32	15625/216 5175/64 14375/144	12167/64 13225/96	164025/1024 50625/256 15625/64 139725/512	43125/128 359375/864 119025/256 330625/576	304175/384
Motor shaft max. diameter (mm)	4	3		4	3		4	3		4	3
Gearbox length "L" (mm)	27.4			35.9		44.4			52.9		
Max. continuous torque (N.m)	3			5		8.5			9.5		
Max. intermittent torque (N.m)	4.5			7.5		12.5			14		
Average backlash no load	0.8°			1.0°		1.0°			1.0°		
Gearbox efficiency	90%			81%		73%			65%		
Max. mass inertia (g.cm ²)	1.6			1.49		1.48			1.48		
Gearbox weight approx (g)	160			240		260			310		
gearbox model	AM-32HPA-X			AM-32HPB-X		AM-32HPC-X			AM-32HPD-X		



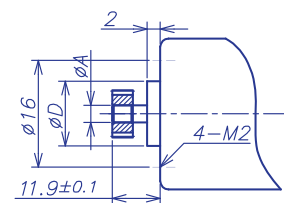
Recommend Motor:
Coreless Motor (w/E)
AM-CL2831MAN
AM-CL2845MAN
Brushless Motor (w/E)
AM-BL2453AN
AM-BL2845AN
AM-BL3260AN
AM-BL3270AN
AM-BD2845AN
AM-BD3260AN
AM-BD3270AN

Recommend Encoder:
Suitable for Coreless Motor
Encoder S: AM-EN1611S***
2~3 Channels
Suitable for Brushless Motor
Encoder S: AM-EN1611S***
2~3 Channels
Encoder T: AM-EN2412T***
2~3 Channels
Encoder S: AM-EN2211S***
2~3 Channels

INPUT GEARBOX DATA

Modulus	0.45		
Press angle	20°		
Teeth number	12	18	24
Max gear hole "A"	3	4	4
Max motor shaft	3	4	4
Motor dimension "D"	7	10	12

MOTOR DIMENSION



GEARBOX MOTOR LENGTH "LT"

Gear motor length L _T	83.1	106.6	126.4
Gear box length L ₁	27.4	35.9	44.4
Motor length L ₂	45	60	70
Encoder length L ₃	10.7	10.7	12

Download datasheet: <https://assunmotor.com/documents-download>

Visit Our Website and Online Shop at <https://assunmotor.com> Contact: info@assunmotor.com