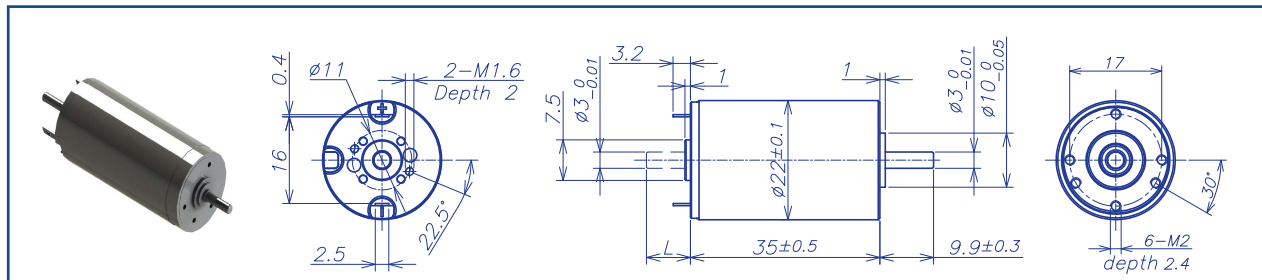


DC BRUSHED CORELESS MOTOR — METAL Brush

AM-CL2235MAE Series



		Precious metal brush			Ball bearings			
Motor Model		0606	0906	1206	1806	2406	3606	4806
Nominal voltage	V	6	9	12	18	24	36	48
No load speed	±12% rpm	5700	6000	5800	5950	6020	6000	6400
No load current	Max 150% mA	55	36	28	18	15	11	9
Recommend limit for continuous operating	Max cont. torque	mN.m	11.4	15.1	15.1	15.3	14.5	13.6
	Rated speed	rpm	4746	4714	4540	4675	4774	5247
	Rated current	mA	1200	1100	800	550	400	265
	Rated power	W	5.7	7.5	7.2	7.5	7.3	7.2
Starting current	mA	6897	5000	3582	2500	1875	1237	1069
Stall torque	mN.m	68.2	70.6	69.7	71.2	70.2	69.6	75.3
Maximum power output	W	10.2	11.1	10.6	11.1	11.1	10.9	12.6
Maximum efficiency	%	83	84	83	84	83	82	82
Terminal resistance	±12% Ω	0.87	1.8	3.35	7.2	12.8	29.1	44.9
Inductance	(1KHZ) mH	0.11	Null	Null	Null	1.54	Null	Null
Mechanical time constant	ms	5.3	5.4	5.3	5.3	5.5	5.5	6.4
Moment of inertia	gcm ²	6.1	6.1	6.1	6.1	6.1	6.1	6.1
Torque constant	mN.m/A	10	14.2	19.6	28.7	37.8	56.8	71.0
Speed constant	rpm/V	958	672	487	333	253	168	134
Speed/ torque gradient	rpm/mN.m	83.6	85	83.2	83.6	85.7	86.2	85.0
Weight	g	75	75	75	75	75	75	75

ADDITIONAL INFORMATION

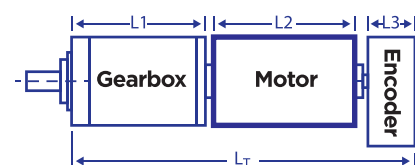
Motor thermal resistance:	15.7 K/W	Motor thermal time constant:	709 S
Axial (dynamic):	2.5 N	Radial (5mm from mounting face):	16.0 N
Press-fit force (static):	16 (90)N	Max allowable screw depth into flange:	2.4mm
Maximum radial play (5mm from mounting face):	≤0.02 mm	Axial play	Preset
Maximum winding temperature:	125°C	Ambient temperature range:	-40 to 85°C

Total Length (Gearbox and Motor): L_T=L₁+L₂+L₃

L1:24GP	L1:26GP	L2:CL22	L3: EN16S
24.0	25.7	35.0	10.7
34.3	36.0		L3: EN16T
42.8	44.5		12.0
51.3	53.0		

Remarks: Client can choose gearbox and encoder to match with this motor. Some combinations are listed here for reference.

AM-CL2235MAE Combination Scheme



Recommended Gearbox:
Planetary Gearbox:
AM-24GP
AM-26GP

Recommended Encoder:
Encoder S: AM-EN1611S***
3 Channels
Encoder T: AM-EN1612T***
3 Channels

For more combination specs, visit Assun Motor website.

Motor data tested at 25°C. Motor operation exceeding continuous limits will reduce life or result in damage. At elevated ambient temperatures, load current must be reduced.

Download datasheet: <https://assunmotor.com/documents-download>

Visit Our Website and Online Shop at <https://assunmotor.com> Contact: info@assunmotor.com